

标题: TJC20081 系列连接器

Title: TJC20081 Connector

目录

Content

1. 更改履历 Change record
2. 范围 Scope
3. 产品描述 Product description
4. 相关标准 Related standards
5. 参数范围 Parameter ratings
6. 产品性能 Performance
7. 测试分组 Test sequences

中国·浙江省乐清市虹桥镇幸福东路 1098 号 合兴工业园 1098, Xingfu `Road(East), CWB Industrial Zone, Hongqiao, Yueqing, Zhejiang 325608, China Tel: 86-577-61313157 (Research & Development Dept.) Tel: 86-577-62312253 (Sales Dept.)	制定 Edit: <u>尹恒 2022.08.12</u>	产品名称 Product name: <u>TJC20081 系列连接器</u>
	审核 Check: <u>王国英 2022.08.12</u>	编号 Document No.: <u>PS4176</u>
	批准 Approval: <u>刘冬旭 2022.08.12</u>	版本 Revision: <u>V0</u>



产品规格书

PRODUCT SPECIFICATION

1.更改履历 Change record

版本号 Version No.	更改前描述 Description before modification	更改后描述 Description after modification	更改人/日期 Reviser/Date
V0	/	首版发布 First release	尹恒 Heng.Yin 2021/08/26
V1	/		
V2			

产品名称 Product name:	TJC20081 系列连接器	编号 Document No.	PS4176	版本号 Version No.	0
-----------------------	----------------	--------------------	--------	--------------------	---



产品规格书

PRODUCT SPECIFICATION

2. 适用范围 Scope

本产品规格书适用于浙江合兴电子元件有限公司生产的 WTW 2.0P 阴型 & 阳型电子连接器，产品名称：TJC20081 系列连接器。

This product specification covers the requirement for wire to wire 2.0mm pitch Receptacle & Plug connector, which are designed and manufactured by CWB Electronics(ZheJiang) Co.,LTD. P/N: TJC20081 Connector.

3. 产品描述 Product description

TJC20081 系列连接器产品为家电连接器产品，产品部件组成如下：

The TJC20081 series connector designed for home appliances connection. part checklist as following form:

零件名称 Part name	规格型号 Part No.	曾用规格型号 Previous part No.	描述 Description
插簧 Contact	CH-TJC20081-**-	CH-TJC20081	AWG#28~AWG#26
插簧 Contact	CH-TJC20081-1-**-	CH-TJC20081-1	AWG#24~AWG#22
插针 Pin contact	CZ-TJC20081-**-	CZ-TJC20081	AWG#24~AWG#22
条形连接器孔座 Receptacle housing	TJC20081-5Y (**-*)	TJC20081-5Y	PBT UL94 V-0
锁紧片 Lock plate	TJC20081-5S (**-*)	TJC20081-5S	PA66+GF UL94 V-0 GW750°C
条形连接器针座 Plug housing	TJC20081-5A (**-*)	TJC20081-5A	PA66 UL94 V-0

4. 相关标准 Related standards

以下参考文件是本规格书的一个组成部份。若本规格书中的要求与产品图纸发生冲突，以产品图中的要求为优先；若本规格书中的要求与参考文件中的要求冲突，以本规格书要求为优先。

The following documents form a part of this specification. In the event of conflict between the requirements of this specification and the product drawing, the product drawing shall take precedence. In the event of conflict between the requirements of this specification and the referenced documents, this specification shall take precedence.

GB/T 2421 环境试验 概述和指南

Environmental testing — General and guidance

GB/T 2423 环境试验 试验方法

Environmental testing — Test methods

GB/T 2424 环境试验 支持文件及导则

Environmental testing — Supporting documentation and guidance

GB/T 5095 电子设备用机电元件基本试验规程及测量方法

Electromechanical components for electronic equipment Basic testing procedures and measuring methods

EIA-364 EIA-364 系列标准

EIA-364 series standards

IPC EIA IPC JEDEC J STD 002E 连接器 / 插座终端可焊性测试方法

产品名称 Product name:	TJC20081 系列连接器	编号 Document No.	PS4176	版本号 Version No.	0
-----------------------	----------------	--------------------	--------	--------------------	---



产品规格书

PRODUCT SPECIFICATION

Solderability Tests for Component Leads, Terminations, Lugs, Terminals and Wires

产品符合 RoHS 标准。

The product should comply with RoHS.

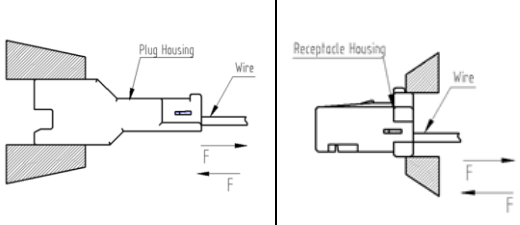
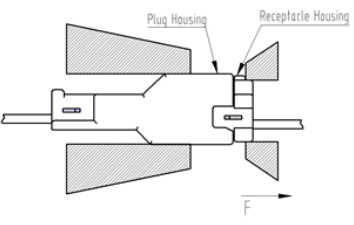
5.参数范围 Parameter ratings:

额定电流 [AC(有效值)/DC] Rated current [AC(rms)/DC]	AWG#28 1.0A Max.	AWG#26 1.5A Max.	AWG#24 2.0A Max.	AWG#22 3A Max.
额定电压[AC(有效值)/DC] Rated voltage [AC(rms)/DC]	100V			
使用温度范围（包含温升） Operating temperature range (include temperature rise)	-25℃~+85℃			
适用线型（具体适用线型请参考压接规格书） Applicable wires(Please refer to the crimping specification for details)	CZ-TJC20081	Wire size:AWG#24~AWG#22(0.2mm ² -0.33 mm ²) Insulation diameter:1.4mm-1.6mm		
	CH-TJC20081	Wire size:AWG#28~AWG#26(0.08mm ² -0.13mm ²) Insulation diameter:0.89mm-1.2mm		
	CH-TJC20081-1	Wire size:AWG#24~AWG#22(0.2mm ² -0.33 mm ²) Insulation diameter:1.4mm-1.6mm		

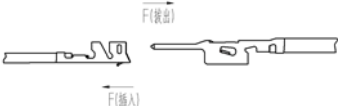
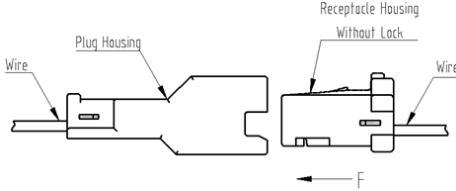
产品名称 Product name:	TJC20081 系列连接器	编号 Document No.	PS4176	版本号 Version No.	0
-----------------------	----------------	--------------------	--------	--------------------	---

6. 产品性能 Performance

6.1 机械性能 Mechanical

序号 No.	项目 Item	测试条件 Test condition	规格 Requirement	
6.1.1	外观 Appearance	目测 Checking by eyes 视力: 1.0 以上 Eyesight: > 1.0 照明: (200~300) lx Lamp: (200~300) lx 目测距离: (0.3~0.5) m Space: (0.3~0.5) m GB/T 5095.2 Method 1a	1. 塑料件表面应无明显疤痕、凹陷、开裂及影响使用的变形。 Plastic part: smooth and flat surface without discolor, broken, crack, and distortion, etc. 2. 金属件表面无锈蚀、氧化、无明显的机械损伤及电镀层脱落等缺陷。 Metal part: bright and even surface without rust, oxide, fog and obvious physical damage, etc.	
6.1.2	端子插入力与 固定力 Insertion force and retention force for contact	应测量将端子沿轴线方向插入孔座和拔出孔座的力, 测试速度不大于25 mm/min.。 The force of inserting and pulling the contact into and out of the housing along the axis shall be measured (Testing speed: <25 mm/min.) GB/T 5095.8 Method 15d / EIA-364-29B	插入力 (最大值) Insertion force (Max.)	固定力 (不带锁紧片测试) (最小值) Retention force (Test without locking plate) (Min.)
			10N	10N
6.1.3	压着部位抗张 强度 Crimp tensile strength	在已压接端子的头部和导线上施加拉力, 并测量将导线从端子拉出或导线断裂所需的力, 测试速度不大于 25 mm/min.。 Pulling load shall be applied to a correctly crimped contact and a wire. The load required to pull the wire out of the contact or break the wire shall be measured. (Testing speed: <25 mm/min.) GB/T5095.8 Method 16d / EIA-364-08B	AWG#22: 39.2 N Min. AWG#24: 29.4 N Min. AWG#26: 19.6 N Min. AWG#28: 9.8 N Min.	
6.1.4	锁扣强度 Lock strength	固定连接器和测力计, 在连接器轴线方向将配合后的连接器拔出, 速度不大于25 mm/min., 测量时连接器应无端子或端子不影响锁扣强度的测量结果。 Apply axial withdraw force on the connector which without contact or the contacts shall not affect lock strength at a rate less than 25 mm/min. GB/T 5095.8 Method 15f / EIA-364-29B	20 N Min.	
				

产品名称 Product name:	TJC20081 系列连接器	编号 Document No.	PS4176	版本号 Version No.	0
-----------------------	----------------	--------------------	--------	--------------------	---

6.1.5	插簧与插针的插拔力 Insertion and withdrawal force for pin in the contact	固定连接器和/或测力计，在端子轴线方向将插针插入和拔出插簧，测试速度不大于 25 mm/min。 Insert the pin contact into and pull out the socket contact in the direction of the terminal axis (Testing speed: <25 mm/min.) GB/T 5095.7 Method 13b / EIA-364-13B 	插入力（最大值） Insertion force (Max.)		拔出力（最小值） Withdrawal force (Min.)	
			9.8N		0.2N	
6.1.6	成品插入力与拔出力（去锁扣） Insertion force and withdrawal force (without lock)	将装有已压接端子的孔座与阳连接器做插入和拔出，测量首次插入力、首次拔出力及第50次拔出力，测试速度不大于25 mm/min。 A housing with crimped contacts and a header shall be mated and unmated on the mating axis. Initial insertion and withdrawal forces and withdrawal force at 50th. shall be measured. (Testing speed: <25 mm/min.) GB/T 5095.7 Method 13b / EIA-364-13B 	极数 No. of poles	插入力（最大值） Insertion (Max.)	拔出力（最小值） Withdrawal (Min.)	
			5P	初次 1st. 23N	初次 1st. 1.1N	第三十次 30th. 0.7N
6.1.7	机械振动 Vibration	插合连接器，串联在直流电源上，电流100 mA；并模拟正常工作状态：振频为（10~55~10） Hz，每个循环时间为1分钟，振幅1.52 mm。沿XYZ三轴正反方向各循环2小时。 Mate connectors subjected them to following vibration conditions, for a period of 2 hours in each of 3 mutually perpendicular axes, 100 mA current shall be applied. Frequency: (10~55~10) Hz/min. Cycling time: 1min. Amplitude: 1.52 mm. GB/T 5095.4 Method 6d / EIA-364-28D	外观：无损伤（参照6.1.1） Appearance: no damage.(refer to 6.1.1) 接触电阻：25 mΩ Max. Contact resistance: 25 mΩ Max. 电流中断时间：1 μsec Max. Current interruption: 1 μsec Max.			
6.1.8	机械冲击 Shock	连接器相配，沿XYZ三轴正反方向各冲击3次（总共18次），在测试过程中通以100 mA电流。 冲击强度：490 m/s ² 持续时间：11 ms Mate connectors and subject them to the following shock conditions, 3 times of shock shall be applied for each 6 directions along 3 mutually perpendicular axes, passing DC 100mA current during the test.(total of 18 shocks) Test pulse: 490 m/s ² Duration: 11 ms GB/T 5095.4 Method 6c / EIA-364-27B	外观：无损伤（参照6.1.1） Appearance: no damage.(refer to 6.1.1) 电流中断时间：1 μsec Max. Current interruption: 1 μsec Max.			
6.1.9	机械寿命 Durability	以每分钟 10 次的速度插拔 30 次。 30 cycles for mating and unmating test at the speed of 10 cycles per minute GB/T 5095.5 Method 9a / EIA-364-09C	外观：无损伤（参照6.1.1） Appearance: no damage.(refer to 6.1.1) 接触电阻：25mΩ Max. Contact resistance: 25mΩ Max.			

产品名称 Product name:	TJC20081 系列连接器	编号 Document No.	PS4176	版本号 Version No.	0
-----------------------	----------------	--------------------	--------	--------------------	---

6.2 电气性能 Electrical

序号 No.	项 目 Item	测试条件 Test condition	规格 Requirement
6.2.1	接触电阻 Contact resistance	插配阴阳连接器后,用小功率电路进行测试。 Mate connectors with dry circuit to test contact resistance GB/T 5095.2 Method 2a / EIA-364-23B	15 mΩ Max. (Initial) 25 mΩ Max. (Final)
6.2.2	绝缘电阻 Insulation resistance	在相邻接触件之间或地线之间,用 500 V DC 电压进行测试。 Apply a voltage of 500 V DC between adjacent contacts and between contacts to ground. GB/T 5095.2 Method 3a / EIA-364-21C	1000 MΩ Min. (Initial) 500 MΩ Min. (Final)
6.2.3	耐电压 Withstand voltage	相邻接触件之间或地线之间施加 800 V AC (有效值),漏电流 1 mA 的电压作用,时间 1min。 Apply a voltage of 800 V AC (rms) and leakage current of 1 mA between adjacent contacts or ground cables for 1 minute. GB/T 5095.2 Method 4a / EIA-364-20B	外观: 无击穿和飞弧现象 Appearance: no breakdown or flashover
6.2.4	温升 Temperature rise	插合连接器, 通以最大允许电流, 测温度的差值。 Mate connectors and measure the temperature rise of contact when the maximum AC rated current is passed. GB/T 5095.3 Method 5a / EIA-364-70A	Δ30℃ Max.

6.3 环境性能 Environmental

序号 No.	项 目 Item	测试条件 Test condition	规格 Requirement
6.3.1	耐高温 Heat resistance	连接器配合后, 于 (85±2) °C 的空气中放置 250 小时, 再回到室温中放置 (1~2) 小时测定。 Mated connectors exposed to the condition of (85±2) °C for 250 hours, recovery time (1~2) hours GB/T 5095.6 Method 11i / EIA-364-17B	外观: 无损伤 (参照6.1.1) Appearance: no damage.(refer to 6.1.1) 接触电阻: 25 mΩ Max. Contact resistance: 25 mΩ Max. 绝缘电阻: 500 MΩ Min. Insulation resistance: 500 MΩ Min. 耐电压: 500 V Min. Withstand voltage: 500 V Min.
6.3.2	恒定湿热 Humidity	温度(40±2) °C, 相对湿度(90~95) %, 搁置时间 240 小时, 取出恢复 (1~2) 小时后检查。 Mated connectors exposed to the condition of temperature (40±2) °C, humidity (90~95) % for 240 hours, recovery time (1~2) hours GB/T 5095.6 Method 11c / EIA-364-31B	外观: 无损伤 (参照6.1.1) Appearance: no damage.(refer to 6.1.1) 接触电阻: 25 mΩ Max. Contact resistance: 25 mΩ Max. 绝缘电阻: 500 MΩ Min. Insulation resistance: 500 MΩ Min. 耐电压: 500 V Min. Withstand voltage: 500 V Min.

产品名称 Product name:	TJC20081 系列连接器	编号 Document No.	PS4176	版本号 Version No.	0
-----------------------	----------------	--------------------	--------	--------------------	---

6.3.3	<p>温度循环 Temperature cycling</p>	<p>把试验样品分别放入高、低温试验箱中，按下列步骤调试温度： a) 在(-55±2) °C的恒温条件下放置 0.5 小时； b) 在(85±2) °C的恒温条件下放置 0.5 小时； 从 a)到 b)为一个循环，周期温度转换时间应不大于 5 分钟，共进行 25 个循环,恢复 (1~2) 小时后检查。 Mated connectors shall be tested under the following conditions</p> <table border="1"> <thead> <tr> <th></th> <th>Temperature °C</th> <th>Duration</th> </tr> </thead> <tbody> <tr> <td>1</td> <td>-55±2</td> <td>0.5 h</td> </tr> <tr> <td>2</td> <td>Room Temp.</td> <td>5 minutes Max.</td> </tr> <tr> <td>3</td> <td>+85±2</td> <td>0.5 h</td> </tr> <tr> <td>4</td> <td>Room Temp.</td> <td>5 minutes Max.</td> </tr> </tbody> </table> <p>Step 1 to 4 is one cycle,25 cycles shall be tested, recovery time (1~2) hours GB/T 5095.6 method 11d / EIA-364-32C</p>		Temperature °C	Duration	1	-55±2	0.5 h	2	Room Temp.	5 minutes Max.	3	+85±2	0.5 h	4	Room Temp.	5 minutes Max.	<p>外观：无损伤（参照6.1.1） Appearance: no damage.(refer to 6.1.1) 接触电阻：25 mΩ Max. Contact resistance: 25 mΩ Max. 绝缘电阻：500 MΩ Min. Insulation resistance: 500 MΩ Min. 耐电压：500 V Min. Withstand voltage: 500 V Min.</p>
	Temperature °C	Duration																
1	-55±2	0.5 h																
2	Room Temp.	5 minutes Max.																
3	+85±2	0.5 h																
4	Room Temp.	5 minutes Max.																
6.3.4	<p>盐雾 Salt spray</p>	<p>把试验样品从试验箱顶悬挂下来，采用浓度为(5±1)%(质量百分比)的氯化钠溶液，在(35±2) °C温度下连续雾化 48 小时，试验后用流动的蒸馏水轻轻洗去表面沉积物。在常温常湿条件下恢复 (1~2) 小时。 48 hours spray, at temp (35±2) °C, NaCl mist concentration (5±1)%. After test wash parts and put it into room ambient for (1~2) hours GB/T 5095.6 Method 11f / EIA-364-26B</p>	<p>外观：无损伤(五金件应无露出底金属的严重锈蚀；使用预镀好的型材，其落料面允许有不影响其性能的轻微腐蚀。) Appearance: no damage (no erosion on material exposed. and plating material, slight erosion on the cutting surface is acceptable) 接触电阻：20 mΩ Max. Contact resistance: 20 mΩ Max.</p>															
6.3.5	<p>工业气体(氨气)Industrial gas(Ammonia)(NH₃)</p>	<p>连接器在每升容积内含25毫升3 %氨溶液的氨气箱中暴露7小时。 After 7 hours exposure in ammonia chamber with 25 mL of 3 % ammonia solution for every liter of chamber capacity</p>	<p>无应力腐蚀开裂 No stress corrosion cracking 接触电阻：25 mΩ Max. Contact resistance: 25 mΩ Max.</p>															
6.3.6	<p>硫化氢气体测试 (H₂S gas test)</p>	<p>连接器配合后，在温度 (40±3) °C、湿度 80±5 %、H₂S 气体浓度为 3±1ppm 的环境中放置 96 小时。 Mated connectors exposed to the condition of temperature (40±3) °C, humidity 80±5 %, H₂S gas concentration of 3 ± 1ppm for 96 hours</p>	<p>接触电阻：25 mΩ Max. Contact resistance: 25 mΩ Max.</p>															

<p>产品名称 Product name:</p>	<p>TJC20081 系列连接器</p>	<p>编号 Document No.</p>	<p>PS4176</p>	<p>版本号 Version No.</p>	<p>0</p>
-------------------------------	-----------------------	----------------------------	---------------	----------------------------	----------



产品规格书

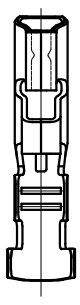
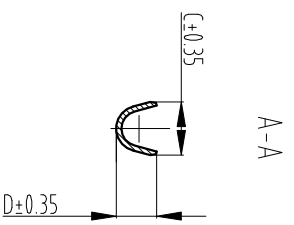
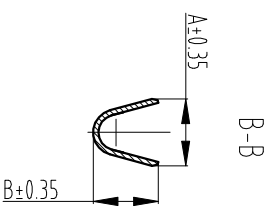
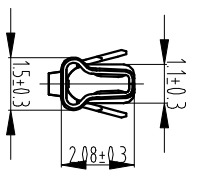
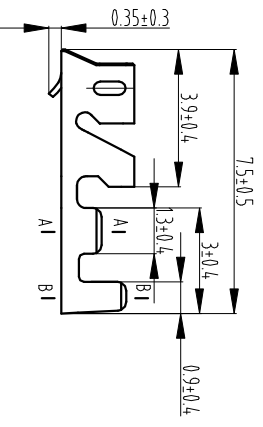
PRODUCT SPECIFICATION

7. 测试分组 Test sequences (Samples: 5PCS)

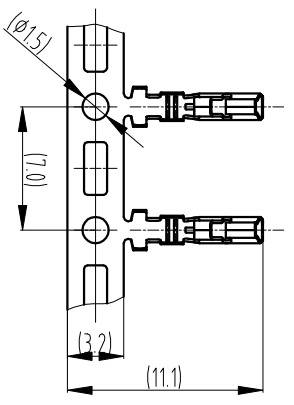
测试组 Group number	A	B	C	D	E	F	G	H	I	J	K	L	M	N	O	P	Q	R
外观 Appearance	1	1	1	1	1	1,5	1,3	1,3	1	1	1,3	1	1,7	1,7	1,7	1,5	1,3	1
端子插入力与固定力 Insertion force and retention force for contact	2																	
压着部位抗张强度 Crimp tensile strength		2																
锁扣强度 Lock strength			2															
插簧与插针的插拔力 Insertion and withdrawal force for pin in the contact				2														
成品插入力与拔出力 (去锁扣) Insertion force and withdrawal force(without lock)					2													
机械振动 Vibration						3												
机械冲击 Shock							2											
机械寿命 Durability								2										
接触电阻 Contact resistance						2,4			2				2,4	2,4	2,4	2,4	2,4	2,4
绝缘电阻 Insulation resistance									2				5	5	5			
耐电压 Withstand voltage											2		6	6	6			
温升 Temperature rise												2						
耐高温 Heat resistance													3					
恒定湿热 Humidity														3				
温度循环 Temperature cycling															3			
盐雾 Salt spray																3		
工业气体(氨气) Industrial gas(Ammonia)(NH ₃)																	3	
硫化氢气体测试 (H ₂ S gas test)																		3

产品名称 Product name:	TJC20081 系列连接器	编号 Document No.	PS4176	版本号 Version No.	0
-----------------------	----------------	--------------------	--------	--------------------	---

General Tolerance		Dimension	Tolerance	Rev. No	Location	Description	Reviser	Date
	0~3	±0.13						
	3~18	±0.23						
	18~50	±0.35						
	≥50	±0.55						



Contact view
1:2



Part No	A	B	C	D
CH-TJC20081-1	2.2	2.45	1.7	1.55
CH-TJC20081	1.9	1.85	1.5	1.15

- Notes:
1. Material: Phosphor bronze, thickness=0.15mm
 2. Surface finish: tin plated
 3. Matched receptacle housing: TJC20081-nY
 4. Applicable wires:
 - CH-TJC20081 AWG#28~AWG#26
 - CH-TJC20081-1 AWG#24~AWG#22
 5. Compliant to the current RoHS

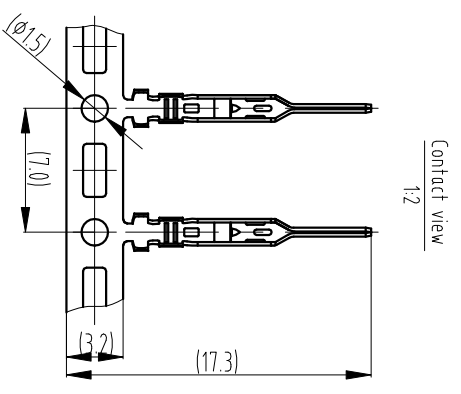
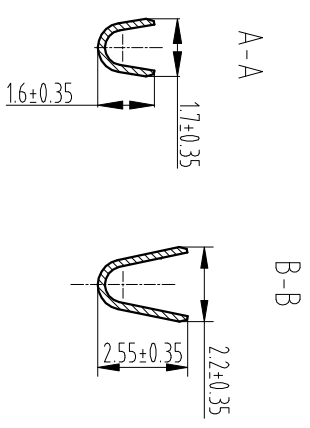
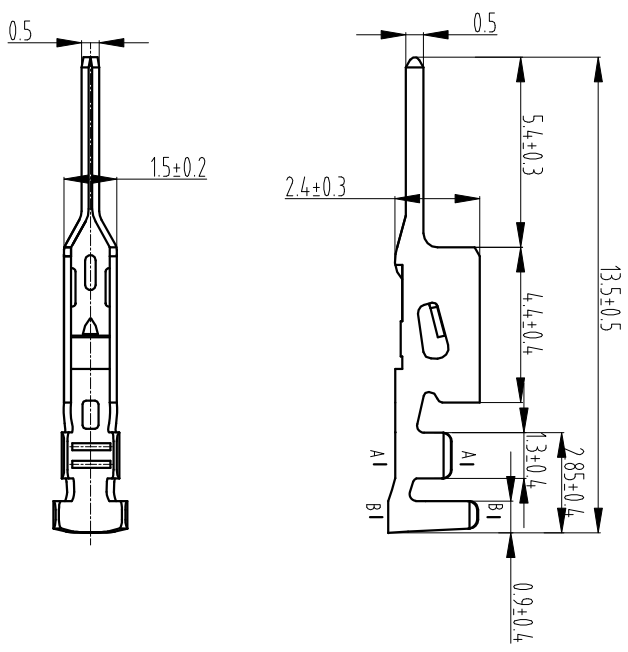
CUSTOMER DRAWING

Title: 2.0mm pitch WTW contact

Drawn	Heng Yin 2022.8.12	Unit	mm	Scale	5:1	Size	A4	Edition	B	Part No.:	CH-TJC20081**
Checked	Guoying Wang 2022.8.12	Sheet No.	1 of 1							Previous part No.:	CH-TJC20081
Approved	Dongxuliu 2022.8.12									Document No.:	CP-DWG-01313
										Specification No.:	PS4.176

CWB

General Tolerance		Dimension	Tolerance	Rev No	Location	Description	Reviser	Date
0~3	±0.13							
3~18	±0.23							
18~50	±0.35							
≥50	±0.55							

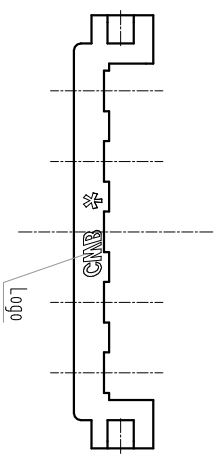
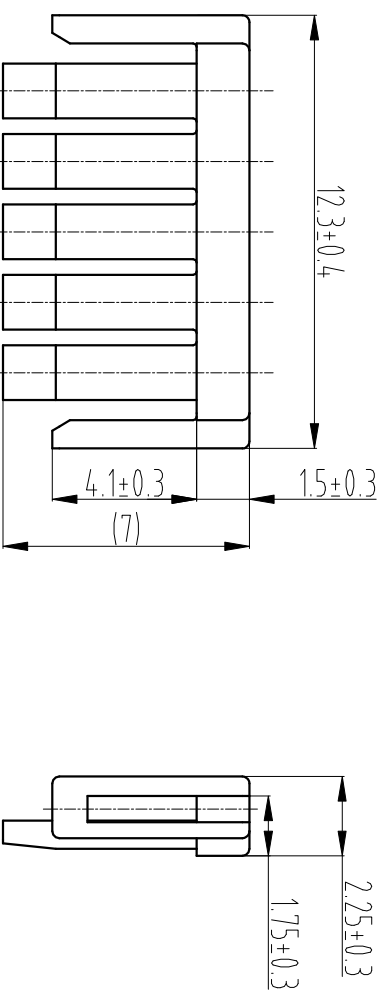


- Notes:
- 1.Material: Phosphor bronze,thickness=0.2mm
 - 2.Surface finish: tin plated
 - 3..Matched plug housing: TJC20081-nAR
 - 4.Applicable wires:AWG#24~AWG#22
 - 5.Compliant to the current RoHS

CUSTOMER DRAWING				Title:	
Drawn	Heng Yin 2022.8.12	Unit	mm	Scale	5:1
Checked	Guoying Wang 2022.8.12	Sheet No.	1 of 1	Size	A4
Approved	Dongxuli 2022.8.12	Edition	B	Part No.:	CZ-TJC20081.**
				Previous part No.:	CZ-TJC20081
				Document No.:	CP-DWG-0312
				Specification No.:	PS4.176

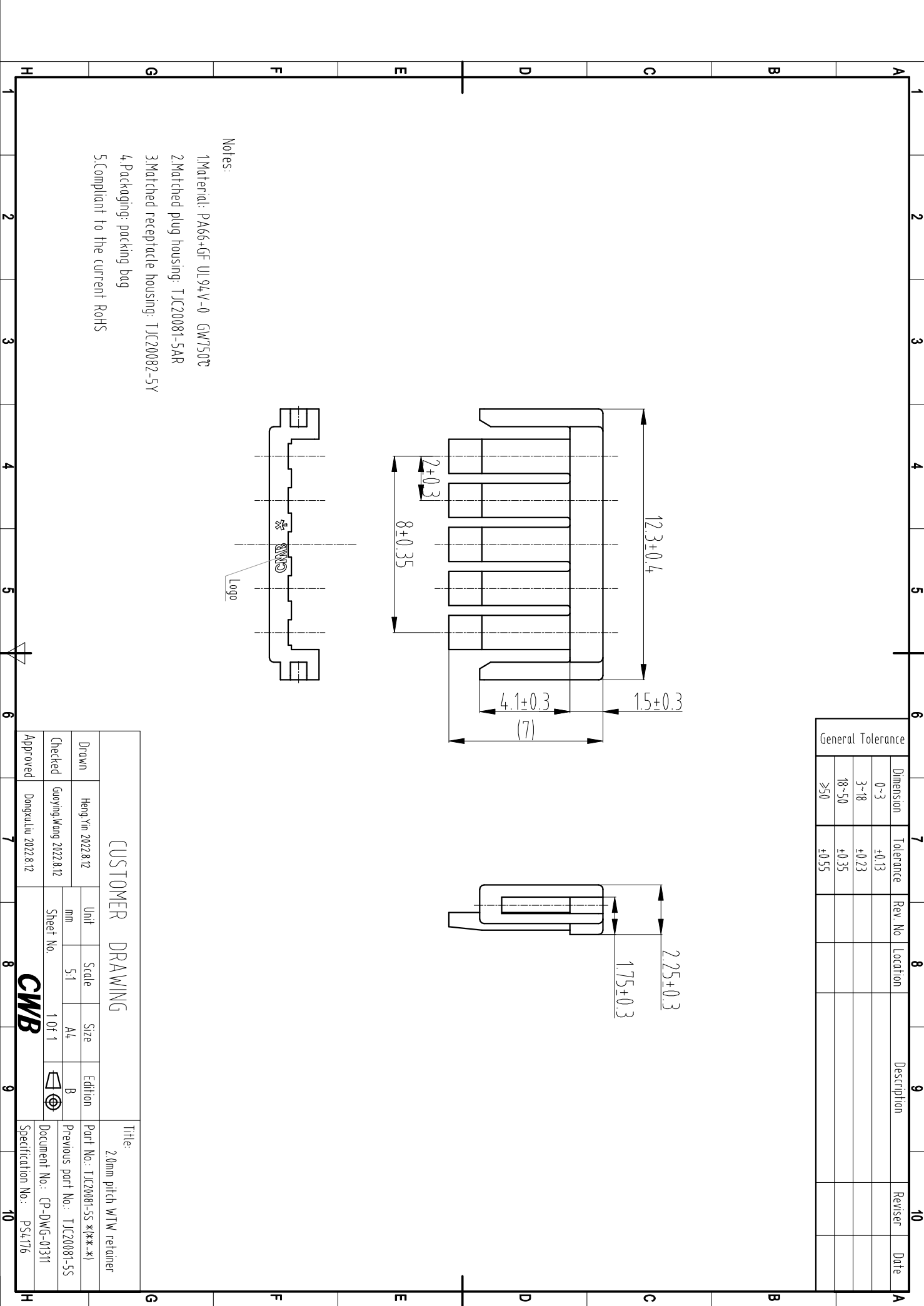
CWB

General Tolerance		Dimension	Tolerance	Rev. No	Location	Description	Reviser	Date
	0~3	± 0.13						
	3~18	± 0.23						
	18~50	± 0.35						
	≥ 50	± 0.55						

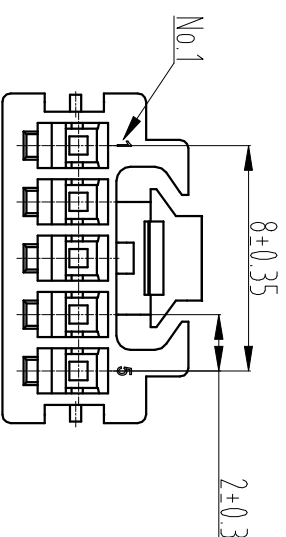
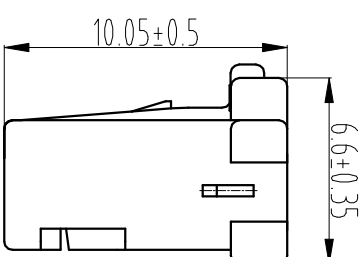
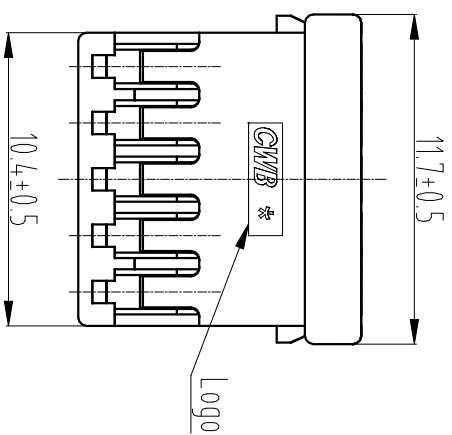


- Notes:
1. Material: PA66+GF UL94V-0 GW750T[®]
 2. Matched plug housing: TJC20081-5AR
 3. Matched receptacle housing: TJC20082-5Y
 4. Packaging: packing bag
 5. Compliant to the current RoHS

CUSTOMER DRAWING				Title:	
Drawn	Heng Yin 2022.8.12	Unit	mm	Scale	5:1
Checked	Guoying Wang 2022.8.12	Sheet No.	1 of 1	Size	A4
Approved	Dongxu Liu 2022.8.12	Edition	B	Part No.:	TJC20081-5S *(*k*.*)
				Previous part No.:	TJC20081-5S
				Document No.:	CP-DWG-01311
				Specification No.:	PS4.176



General Tolerance				7	8	9	10
Dimension	Tolerance	Rev. No	Location	Description	Reviser	Date	
0~3	±0.13						
3~18	±0.23						
18~50	±0.35						
≥50	±0.55						



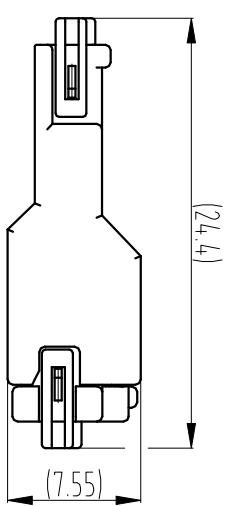
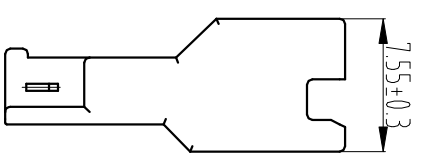
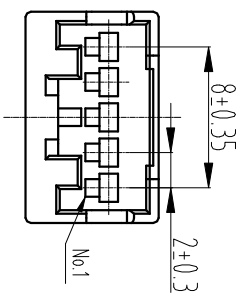
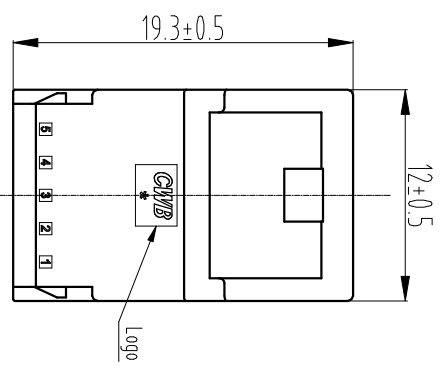
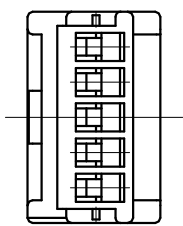
Notes:

- 1.Material: PBT UL94V-0
- 2..Matched plug housing:TJC20081-5AR
- 3.Matched retainer: TJC20081-5S
- 4.Matched contact: CH-TJC20081/CH-TJC20081-1
- 5.Packaging: packing bag
- 6.Compliant to the current RoHS

CUSTOMER DRAWING

Drawn	Heng Yin 2022.8.12	Unit	mm	Scale	4:1	Size	A4	Edition	B	Title:	2mm pitch WTW receptacle housing
Checked	Guoying Wang 2022.8.12	Sheet No.	1 of 1		CWB		B		Part No.:	TJC20081-5Y(**-*)	
Approved	Dongxuliu 2022.8.12	Document No.:		CP-DWG-01310	Specification No.:		PS4776				

General Tolerance				Dimension	Tolerance	Rev. No	Location	Description	Reviser	Date
	0~3	±0.13								
	3~18	±0.23								
	18~50	±0.35								
	≥50	±0.55								

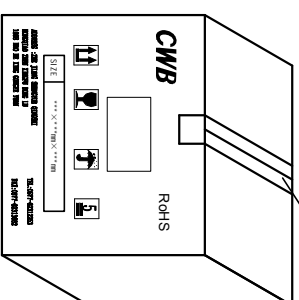
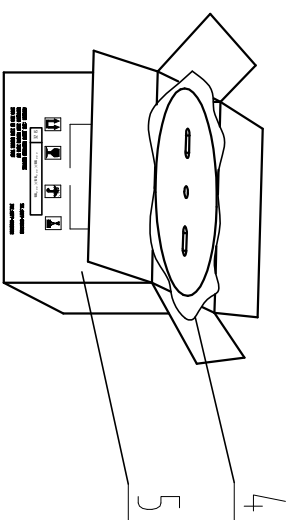
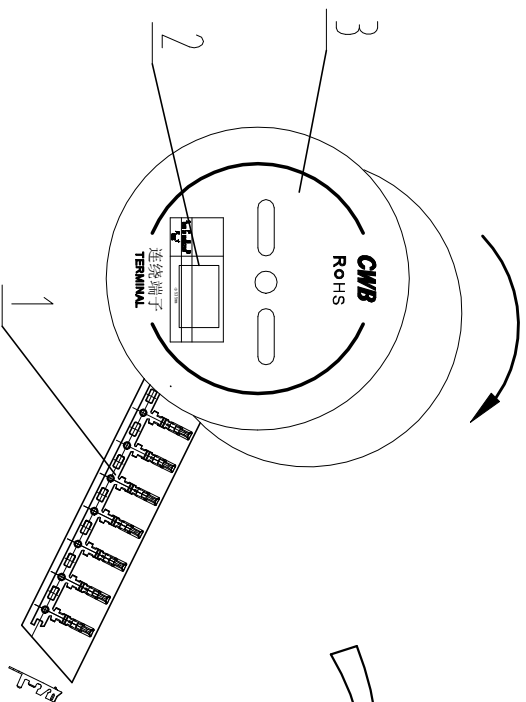


Assembly view
(DIM FYI)

- Notes:
- 1.Material: PA66 UL94V-0
 - 2.Matched receptacle housing:TJC20081-5Y
 - 3.Matched retainer: TJC20081-5S
 - 4.Matched contact: CZ-TJC20081
 - 5.Packaging: packing bag
 - 6.Compliant to the current RoHS

CUSTOMER DRAWING				Title:	
				2.0mm Pitch WTW plug housing	
Drawn	Heng Yin 2022.8.12	Unit	Scale	Size	Edition
Checked	Guoying Wang 2022.8.12	mm	2:1	A4	B
Approved	Dongxuliu 2022.8.12	Sheet No.	1 of 1		
			CWB		
			Part No.:	TJC20081-5AR**-*1	Previous part No.:
			Document No.:	CP-DWG-01309	Specification No.:
			P54776		

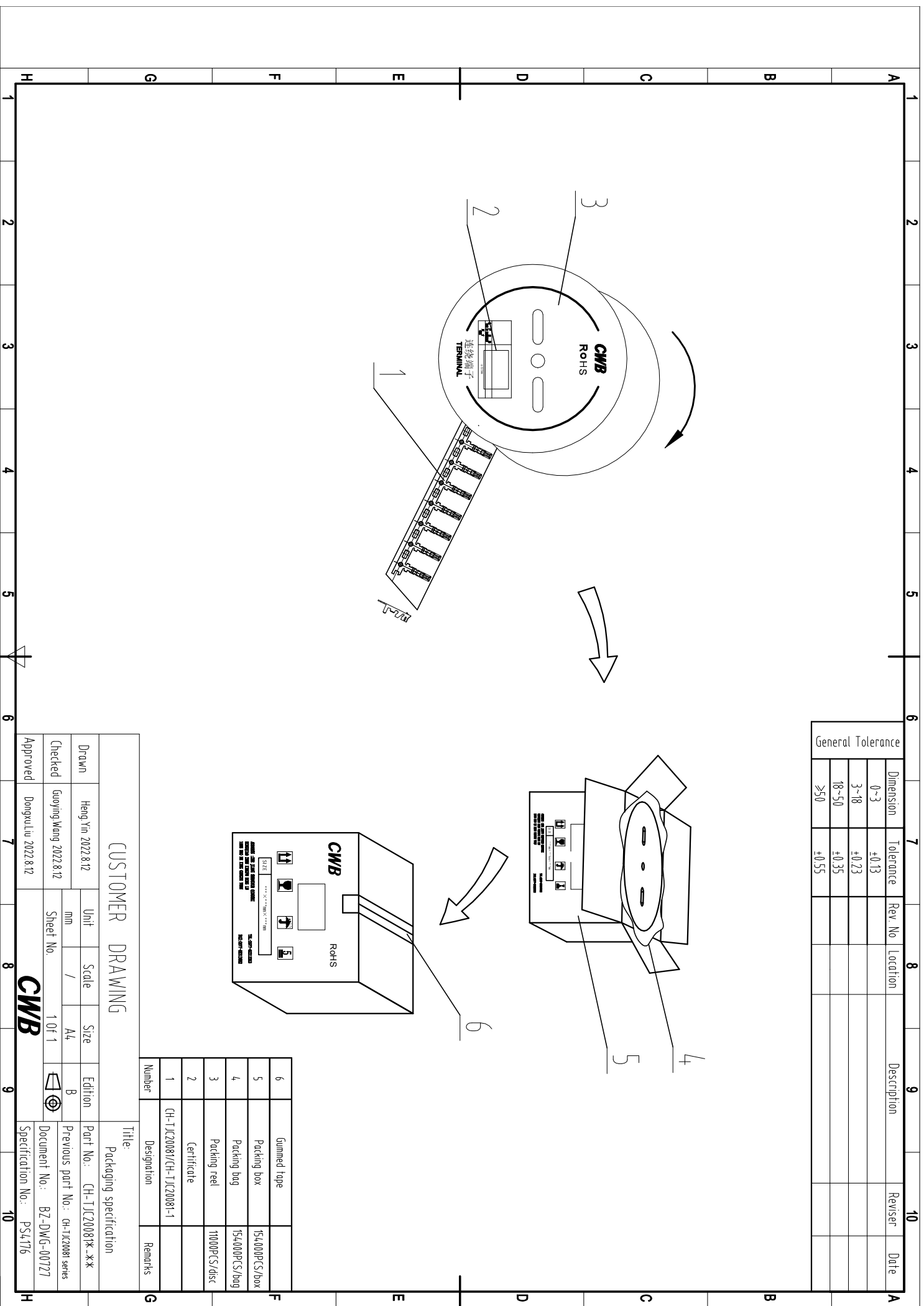
General Tolerance		Dimension	Tolerance	Rev No	Location	Description	Reviser	Date
	0~3	±0.13						
	3~18	±0.23						
	18~50	±0.35						
	≥50	±0.55						



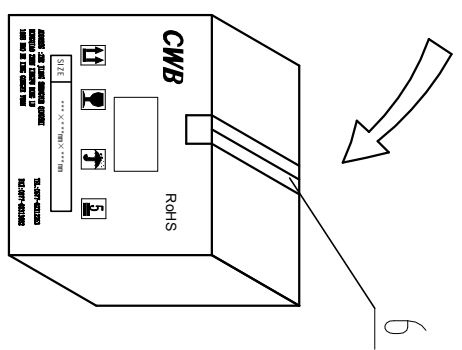
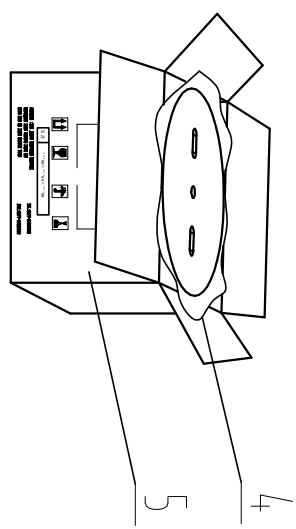
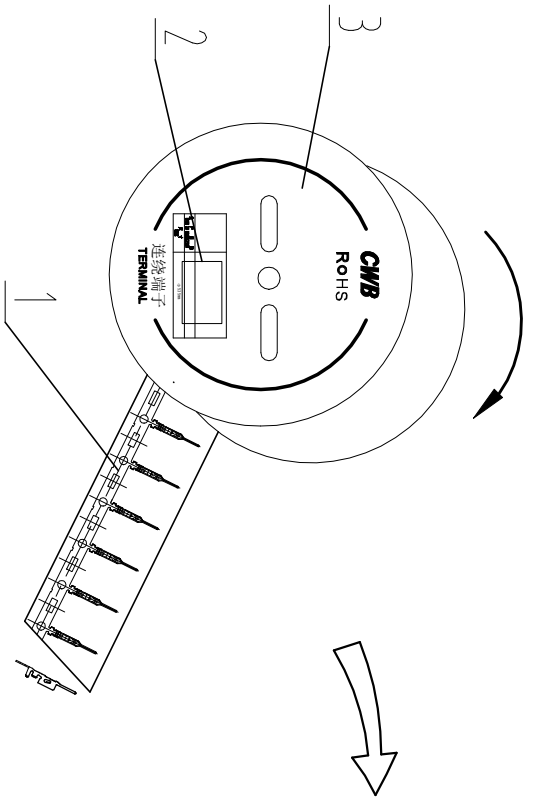
6	Gummed tape	
5	Packing box	154,000PCS/box
4	Packing bag	154,000PCS/bag
3	Packing reel	11000PCS/disc
2	Certificate	
1	CH-TJC2008/CH-TJC2008-1	
Number	Designation	Remarks

CUSTOMER DRAWING

Title: Packaging specification	
Drawn	Heng Yin 2022.8.12
Checked	Guoying Wang 2022.8.12
Approved	Dongxuliu 2022.8.12
Unit	mm
Scale	1/1
Size	A4
Edition	B
Part No.:	CH-TJC2008PK-**.k
Previous part No.:	ch-tjc2008 series
Sheet No.:	1 of 1
Document No.:	BZ-DWG-00727
Specification No.:	PS4.176



General Tolerance		Dimension	Tolerance	Rev No	Location	Description	Reviser	Date
	0~3	±0.13						
	3~18	±0.23						
	18~50	±0.35						
	≥50	±0.55						

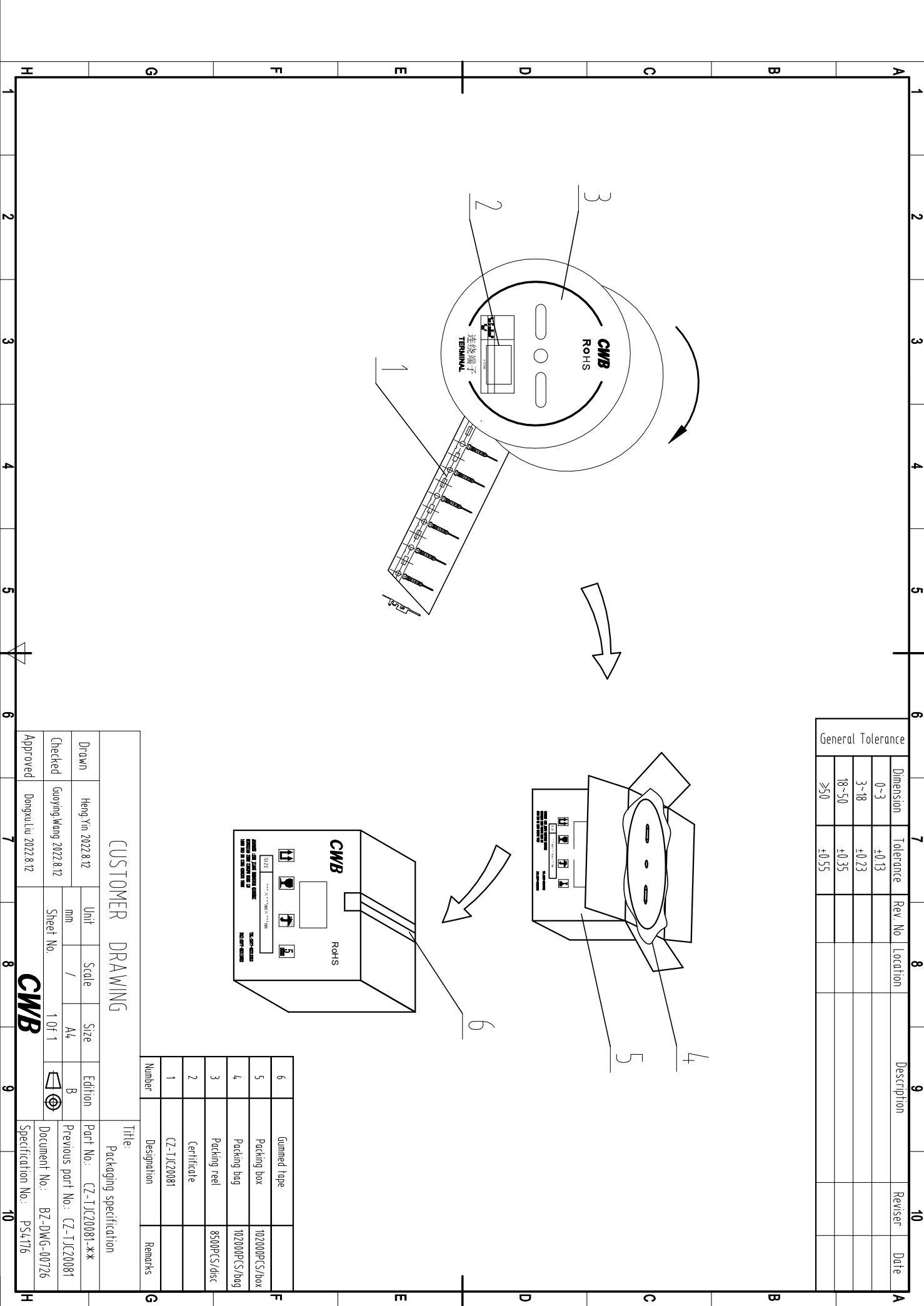


6	Gummed tape	
5	Packing box	102000PCS/box
4	Packing bag	102000PCS/bag
3	Packing reel	8500PCS/disc
2	Certificate	
1	CZ-TJC20081	
Number	Designation	Remarks

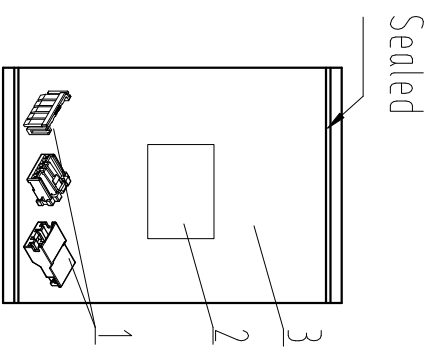
CUSTOMER DRAWING

Title: Packaging specification

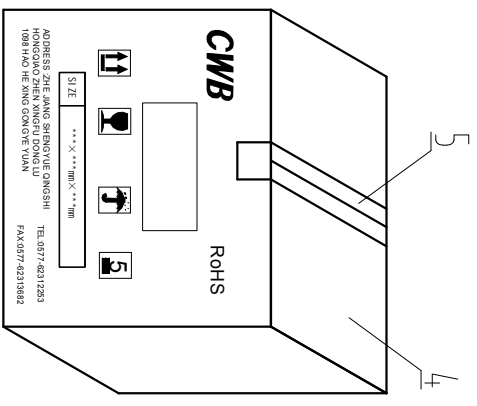
Drawn	Heng Yin 2022.8.12	Unit	mm	Scale	1/1	Size	A4	Edition	B	Part No.:	CZ-TJC20081-xx
Checked	Guoying Wang 2022.8.12	Sheet No.	1 of 1							Previous part No.:	CZ-TJC20081
Approved	Dongxuli 2022.8.12									Document No.:	BZ-DWG-00726
										Specification No.:	PS4.176



Packing bag



Packing box



General Tolerance		Dimension	Tolerance	Rev. No	Location	Description	Reviser	Date
	0~3	±0.13						
	3~18	±0.23						
	18~50	±0.35						
	≥50	±0.55						

5	Gummed tape	TJC20081-5S	1000	
4	Packing box	TJC20081-5Y	1000	
3	Packing bag	TJC20081-5AR	1000	
2	Certificate			
1	TJC20081 series plastic parts			
Number	Designation	Part No.	Pcs/bag	Remarks

CUSTOMER DRAWING						Title: Packaging specification	
Drawn	Heng Yin 2022.8.12	Unit	Scale	Size	Edition	Part No.:TJC20081 series plastic parts	Previous part No.: /
Checked	Guoying Wang 2022.8.12	mm	/	A4	B	Document No.: BZ-DWG-00725	
Approved	Dongxuliu 2022.8.12	Sheet No.	1 of 1			Specification No.: PS4.176	

CWB

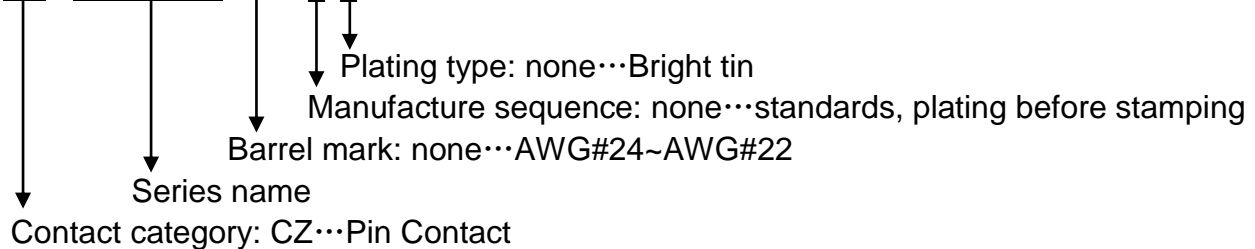
TJC20081 系列命名规则

TJC20081 series naming conventions

1. Contact

CZ-TJC20081-*-*

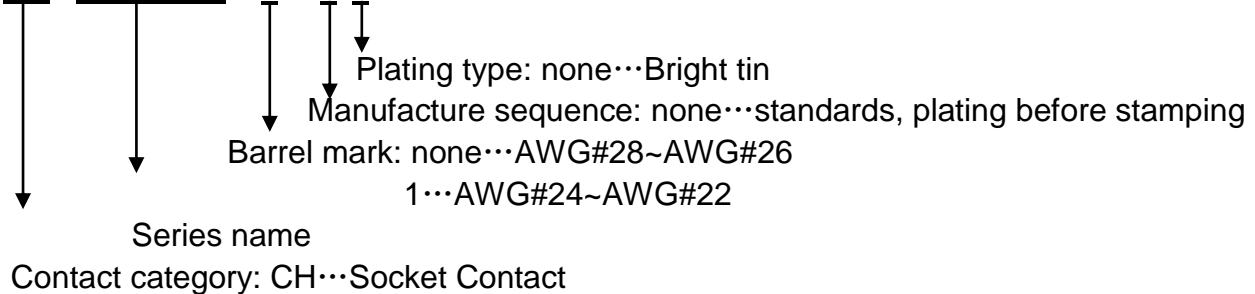
CZ - TJC20081 - * - * *



2. Contact

CH-TJC20081-*-*

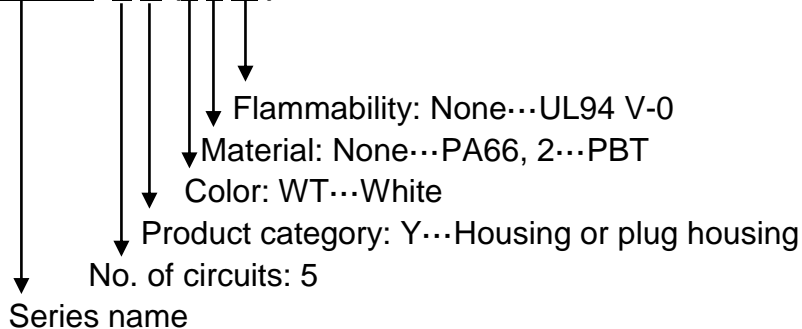
CH - TJC20081 - * - * *



3. Housing

TJC20081-nY(**-*)

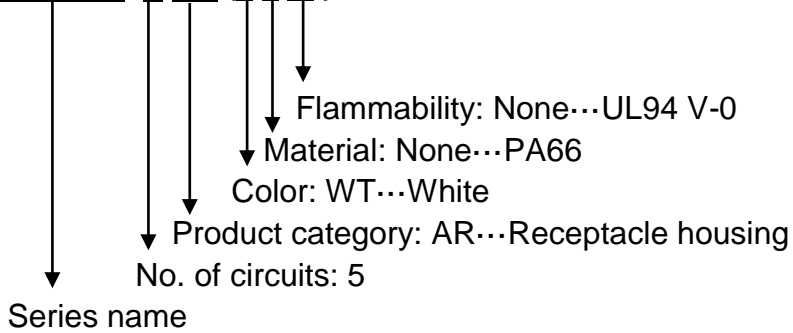
TJC20081 - n Y (* * - *)



4. Receptacle housing

TJC20081-nAR

TJC20081-n AR (**-*)



5. Receptacle

TJC20081-nS * (**-*)

TJC20081-n S * (**-*)

